

# THE SCHOOL DISTRICT OF OSCEOLA COUNTY, FLORIDA

817 Bill Beck Boulevard • Kissimmee • Florida 34744-4492  
Phone: 407-870-4600 • Fax: 407-870-4010 • [www.osceolaschools.net](http://www.osceolaschools.net)

## SCHOOL BOARD MEMBERS

District 1 – Teresa “Terry” Castillo – Chair  
407-577-5022  
District 2 – Julius Melendez – Vice Chair  
321-442-2862  
District 3 – Jon Arguello  
407-433-9082  
District 4 – Clarence Thacker  
407-870-4009  
District 5 – Robert Bass  
407-870-4009



Superintendent of Schools  
Dr. Debra P. Pace

## Agenda

**Business Advisory Board Meeting**  
**@ The Bill Collins Conference Room**  
**817 Bill Beck Boulevard**  
**Kissimmee, FL 34744**

**Wednesday, May 25, 2022**  
**7:30 A.M.**

1. Approve Minutes of April 27, 2022
2. Review Impact Fee & Sales Tax Report
3. Budget Update
4. Facilities Update
5. Next regular meeting: TBD

BUSINESS ADVISORY BOARD MINUTES  
APRIL 27, 2022

**Members Present:** Mel Welch, Turner Wallis, Clyde Wells, Olga Sanchez Fuentes, Shawn Hindle, Greg Filak

**Others/Guests:** Debra Pace, Marc Clinch, Dave Sharma, Angela Barner, Laura Walker, Robert Bass, Randy Shuttera, Luz Skerrett

**Location:** Bill Collins Conference Room

Mr. Welch called the meeting to order.

- **Minutes**

The minutes from the March 23, 2022, meeting were approved with all ayes.

- **Impact Fee and Sales Tax Reports**

Mrs. Angela Barner reviewed the Impact Fee & Sales Tax Reports for the year ending February 28, 2022.

**Impact Fee Revenues**

Collections approx. **\$ 67.7M**

**Infrastructure Sales Surtax Revenue**

Collections approx. **\$ 13.5M**

**School Capital Outlay Surtax Revenue**

Collections approx. **\$ 27M**

**Impact Fee Expenditures**

Expenditures Approx. **\$ 5M**

**Infrastructure Sales Surtax Expenditures (1/4 cent)**

Expenditures approx. **\$ 2.4M**

**School Capital Outlay Surtax Expenditures (1/2 cent)**

Expenditures approx. **\$ 20M**

There was a discussion on road and traffic challenges in the St. Cloud area.

- **Facilities Update & Planning Department**

Mr. Clinch thanked the Board for their continued support. Mr. Clinch invited the members to the next Facilities Workshop on May 3, 2022, at 4 pm. He presented several Projects in Planning, for example, Transportation West, OCSA Comprehensive Renovation and RCES Comprehensive Renovation. Mr. Clinch mentioned that current construction costs are driving up the budget. He mentioned the recent budget adjustment for Celebration Isle ES and Gateway High School Comprehensive Project.

Mr. Sharma presented a Construction and Facilities Update. Several aerial pictures were presented on the progress at o-TECH Welding, PROD/SNS Roof, and the PNHS Basketball Courts.

There was a discussion on future school needs in the Sunbridge Area.

Meeting adjourned.

**BAB Meeting Dates**

The Business Advisory Board has agreed to meet the 4th Wednesday of every month. The next meeting will be held on Wednesday, May 25, 2022, @ 7:30 a.m. in the Bill Collins Conference Room.

**SDOC Business Advisory Board  
Impact Fee Revenue  
For the period ending 3/31/2022**

MONTH	Fiscal Year							
	2018 - 2019		2019 - 2020		2020 - 2021		2021 - 2022	
	Revenue	Units*	Revenue	Units*	Revenue	Units*	Revenue	Units*
July	\$ 2,385,492	267	\$ 10,863,004	1,123	\$ 6,324,659	675	\$ 7,867,108	1,084
August	4,726,773	488	5,697,497	628	6,155,126	586	14,050,633	1,461
September	7,804,166		7,885,645	797	5,030,351	541	7,078,583	638
October	7,679,304	713	6,923,523	731	7,071,236	887	14,931,045	1,357
November	9,018,833	952	5,858,840	584	4,633,389	492	5,234,658	498
December	6,132,620	610	5,076,853	560	5,074,262	563	5,639,683	522
January	4,893,678	483	4,668,053	547	3,681,511	398	7,663,602	749
February	6,609,701	685	4,722,382	458	5,068,058	548	5,186,827	625
March	6,213,597	610	7,787,661	837	9,076,345	858	14,747,661	1,385
April	6,268,996	635	7,099,622	633	9,651,165	1,152		
May	6,613,496	706	3,627,116	378	11,320,247	1,065		
June**	6,062,604	621	4,177,704	481	10,042,573	958		
<b>TOTAL</b>	<b>\$ 74,409,260</b>	<b>6,770</b>	<b>\$ 74,387,899</b>	<b>7,757</b>	<b>\$ 83,128,923</b>	<b>8,723</b>	<b>\$ 82,399,801</b>	<b>8,319</b>

\*Number of Units as computed based on reports received by the City of Kissimmee, City of St. Cloud, and Osceola County

\*\*Accrual

Number of Units Detail				
Type of dwelling	Total Units	Osceola County	City of Kissimmee	City of St Cloud
Single Family	520	391	30	99
Single Family-S/T rental	13	13	0	0
Single Family-Credits	0	0	0	0
Townhomes	208	160	8	40
Townhomes-S/T rental	24	24	0	0
Condominiums	16	16	0	0
Multifamily	603	398	205	0
Mobile Homes	1	1	0	0
<b>Total</b>	<b>1,385</b>	<b>1,003</b>	<b>243</b>	<b>139</b>

Budget	
Forecasted Revenue	\$ 95,000,000

Fund Balance	
Actual Fund Balance	\$ 248,620,792
Budgeted Fund Balance	\$ 224,167,502

**SDOC Business Advisory Board  
Impact Fee Expenditures  
For the period ending 3/31/2022**

PROJECT NAME	Fiscal Year			
	2018 - 2019	2019 - 2020	2020 - 2021	2021 - 2022
Buses	1,850,948	822,176	113,116	
Canoe Creek K-8		1,167,050	14,598,151	4,574,893
Celebration Island Village	709,005	40,856	23,725	525,878
Harmony Middle School - "Middle School AA"	26,882,586	2,607,661	52,692	
Kindred K-8	2,125			
Knightsbridge "BB"				376
Land-Nova Road a/k/a Newman property			8,150,000	
NeoCity Academy	13,936,386	2,578,168		
Poinciana High School Wing Addition		6,023,094	1,656,129	2,100
St Cloud High School Wing Addition				365
Sunbridge K8 "CC"				398
Tohopekaliga High School	8,587,940	113,141	9,350	
<b>TOTAL</b>	<b>\$ 51,968,990</b>	<b>\$ 13,352,146</b>	<b>\$ 24,603,163</b>	<b>\$ 5,104,010</b>

**SDOC Business Advisory Board  
School Capital Outlay Surtax Revenue (1/2 Cent)  
For the period ending 3/31/2022**

MONTH	Fiscal Year			
	2018 - 2019	2019 - 2020	2020 - 2021	2021 - 2022
July	\$ 3,247,344	\$ 3,306,679	\$ 2,707,399	\$ 4,233,071
August	2,362,698	2,454,871	1,882,705	3,005,749
September	2,107,519	2,186,347	1,675,718	2,424,595
October	2,906,958	2,945,535	2,964,929	3,958,839
November	2,183,394	2,346,396	1,911,260	2,621,067
December	2,252,301	2,355,790	1,940,911	2,787,349
January	3,545,302	3,683,419	3,485,166	5,332,327
February	2,281,362	2,446,420	1,999,027	2,641,496
March	2,321,866	2,474,997	2,045,878	2,917,219
April	3,750,979	2,812,989	4,174,227	
May	2,496,898	1,116,246	2,805,030	
June*	2,420,032	1,461,649	2,731,593	
<b>TOTAL</b>	<b>\$ 31,876,654</b>	<b>\$ 29,591,338</b>	<b>\$ 30,323,843</b>	<b>\$ 29,921,712</b>

Budget	
Final Budget: Forecasted Revenue	\$ 38,000,000

Fund Balance	
Actual Fund Balance	\$ 87,733,560
Budgeted Fund Balance	\$ 44,449,038

\*Accrual

**SDOC Business Advisory Board  
Infrastructure Sales Surtax Revenue (1/4 Cent)  
For the period ending 3/31/2022**

MONTH	Fiscal Year			
	2018 - 2019	2019 - 2020	2020 - 2021	2021 - 2022
July	\$ 1,626,416	\$ 1,653,542	\$ 1,353,919	\$ 2,120,111
August	1,187,951	1,229,646	940,105	1,503,529
September	1,051,985	1,094,544	838,579	1,212,424
October	1,460,827	1,473,660	1,482,953	1,979,577
November	1,094,073	1,173,745	954,858	1,311,662
December	1,128,780	1,179,052	971,622	1,395,830
January	1,774,559	1,842,450	1,742,835	2,667,069
February	1,141,399	1,224,039	1,000,240	1,321,925
March	1,164,505	1,237,741	1,023,877	1,458,896
April	1,876,971	1,406,608	2,085,479	
May	1,251,681	558,604	1,405,131	
June*	1,213,361	731,997	1,365,888	
<b>TOTAL</b>	<b>\$ 15,972,508</b>	<b>\$ 14,805,628</b>	<b>\$ 15,165,486</b>	<b>\$ 14,971,024</b>

Budget	
Final Budget: Forecasted Revenue	\$ 19,000,000

Fund Balance	
Actual Fund Balance	\$ 39,423,587
Budgeted Fund Balance	\$ 8,262,103

\*Accrual

**SDOC Business Advisory Board  
School Capital Outlay Surtax Expenditures (1/2 Cent)  
For the period ending 3/31/2022**

Type of Expenditure	Fiscal Year			
	2018-2019	2019-2020	2020-2021	2021-2022
<b>Debt Service</b>	\$ 7,037,194	\$ 7,035,848	\$ 7,777,023	\$ 15,089,330
<b>Comprehensive Renovations</b>				
Denn John Middle School	22,605,913	11,114,867	2,745,381	13,800
Gateway High School	71,765	388	756,836	1,953,583
Michigan Avenue Elementary School	19,720,411	1,639,336	1,152,483	-
Reedy Creek Elementary School			16,233	1,798
St. Cloud Middle School	2,417,580	23,942,794	8,923,615	-
<b>Subtotal Comprehensive Renovations</b>	\$ 44,815,669	\$ 36,697,385	\$ 13,594,548	\$ 1,969,181
<b>Other maintenance &amp; renovation projects</b>				
<b>Carpet Replacements/Flooring</b>				
Adult Learning Center	\$ -	\$ -	\$ 36,153	-
Boggy Creek Elementary School	-	11,125.00		
Celebration K-8 School			127,599.00	167,707
Chestnut Elementary School			188,853.00	110,490
Cypress Elementary School			36,132	
Deerwood Elementary School		455,336		
Discovery Intermediate School	93,668	54,027		
East Lake Elementary School		42,221		
Harmony Community School			220,152	66,664
Kissimmee Middle School			71,809	
KOA Elementary		139,245	121,443	
Mill Creek Elementary			155,704	158,838
Narcoossee Elementary School			237,993	27,668
Neptune Elementary School			16,107	
Parkway Middle School	149,780	139,035		
Poinciana Academy of Fine Arts	33,125			
Poinciana High School			104,574	
Ross E. Jeffries Campus	53,648			
St Cloud Elementary		142	291,195	
Sunrise Elementary School		265,345	43,314	
Westside K-8		1,493		
Zenith	20,758		31,075	
<b>Chiller Replacements/BAS:</b>				
Boggy Creek Elementary School			138,423	
Celebration High School		1,068,923	232,029	
Central Elementary School		19,249	547,169	
Cypress Elementary School		214,067	391	
Discovery Intermediate School		223,357		
Flora Ridge Elementary School		235,421	290,548	
Horizon Middle School		205,514		
Kissimmee Elementary School	188,032	251,506		
Kissimmee Middle School	66,254			
Liberty High School	84,497	187,192		
Narcoossee Middle School			264,718	6,186
Partin Settlement Elementary School			492,135	

**SDOC Business Advisory Board  
School Capital Outlay Surtax Expenditures (1/2 Cent)  
For the period ending 3/31/2022**

Type of Expenditure	Fiscal Year			
	2018-2019	2019-2020	2020-2021	2021-2022
Poinciana Academy of Fine Arts	302,758	254,165		
Poinciana High School	4,695	2,644,442	206,953	900
St. Cloud High School			355,666	
<b>Fencing/Gates:</b>				
Adult Learning Center			6,285	
Boggy Creek Elementary School	2,221			
Canoe Creek K8				418
Celebration High School	833			
Celebration K-8 School	27,030			
Central Elementary School	8,952	557		7,431
Cypress Elementary School		5,354		
Deerwood Elementary School		25,314		
Discovery Intermediate School			12,271	
East Lake Elementary School		41,773		
Flora Ridge Elementary School		29,083		15,922
Gateway High School	12,815			
Harmony Community School	33,086			
Harmony High School	12,083	23,152		
Hickory Tree Elementary School	24,664			
Highlands Elementary	57,099	16,449	7,735	
Horizon Middle School	16,820			
Kissimmee Elementary School			24,628	
Kissimmee Middle School			6,911	
Lakeview Elementary School	53	42,148	12,883	
Liberty High School	16,194		16,333	5,464
Michigan Avenue Elementary School			2,185	
Mill Creek Elementary		23,026	8,350	1,965
Narcoossee Middle School	2,160			
Neptune Elementary School			10,504	4,103
Parkway Middle School			4,785	
PATHS		45,404		
Pleasant Hill Elementary School		2,251		
Poinciana Elementary School		27,326	16,746	
Poinciana High School	15,558			
Reedy Creek Elementary School	25,703	4,003	1,947	
Ross E. Jeffries Campus	42,173	375		
St. Cloud High School	107			
St. Cloud Middle School			1,101	
Tohopekaliga High School		16,544		
Westside K-8	36,355	913	4,806	
Zenith	4,787			
<b>HVAC Repairs/Replacements:</b>				
Admin			68	5,399
Celebration High School	56,322			
Celebration K-8 School	162,939	4,924		
Cypress Elementary School		7,894		



**SDOC Business Advisory Board  
School Capital Outlay Surtax Expenditures (1/2 Cent)  
For the period ending 3/31/2022**

Type of Expenditure	Fiscal Year			
	2018-2019	2019-2020	2020-2021	2021-2022
Deerwood Elementary School		7,758		53,337
Harmony High School	3,162	4,478		
Horizon Middle School		152,730	1,891,622	755,362
Kissimmee Elementary School	20,586			
Kissimmee Middle School	66,487	152,541	1,906,674	805,020
Lakeview Elementary School				69,027
Liberty High School	117,555	35,347	3,006	
Narcoossee Middle School	100,827			
Neptune Middle School	3,002		11,798	38,998
oTECH	60,133		35,865	86,733
Partin Settlement Elementary School				134,330
Pleasant Hill Elementary School				47,265
Ross E. Jeffries Campus	1,371	23,822		
Ventura Elementary School			38,971	
<b>Painting /other projects (lighting, fans, windows, stage)</b>				
ALCO	7,616	10,915		
Celebration High School	18,685	184,120		40,205
Celebration K-8 School	21,296	47,509	38,093	64,347
Central Elementary School			24,483	2,018
Chestnut Elementary School				58,448
Cypress Elementary School		41,882	89,846	27,147
Deerwood Elementary School	52,714	47,301	12,471	18,783
Discovery Intermediate School	114,620			346,765
East Lake Elementary School		40,144	9	
Gateway High School	757			
Harmony Community School				72,400
Harmony High School	17,710			11,418
Hickory Tree Elementary School	21,668			
Highlands Elementary				58,000
Horizon Middle School	18,138	41,517	15,693	43
Kissimmee Elementary School		72,387		4,758
Kissimmee Middle School	217,910		64,550	6,807
KOA Elementary		35,446	31,806	
Liberty High School	18,685			30,021
Mill Creek Elementary		43,198	53,907	
Narcoossee Elementary School				59,150
Narcoossee Middle School	21,828	64,586		
New Beginnings				52,000
Osceola High School	18,685		9,000	
Osceola County School for the Arts	89,688			
oTECH		19,898		
Parkway Middle School		44,462		
Pleasant Hill Elementary School			7,951	
Poinciana High School	13,333	247,884	1,487,487	25,532
Reedy Creek Elementary School	32,012			
St. Cloud Elementary School		67,113		3,661
St. Cloud High School			162,424	
Sunrise Elementary School		225	61,352	
Ventura Elementary School		60,702		
Westside K-8	86,808			

**SDOC Business Advisory Board  
School Capital Outlay Surtax Expenditures (1/2 Cent)  
For the period ending 3/31/2022**

Type of Expenditure	Fiscal Year			
	2018-2019	2019-2020	2020-2021	2021-2022
<b>Parking Lot/ Bus Loop/ Concrete /Drainage/ Field-Track</b>				
ALCO			6,470	
Celebration High School			7,899	
Central Elementary School		8,429	6,707	
Countywide		7,929		
Deerwood Elementary School		19,712		
Harmony Community School		4,790		
Hickory Tree Elementary School		4,325		
Horizon Middle School		5,540		
Lakeview Elementary School		7,180	105,680	
Liberty High School		14,871	387,554	
Narcoossee Elementary School		7,035	8,575	
Narcoossee Middle School		433	10,919	
Neptune Elementary School			7,357	
Osceola High School		15,615		
oTECH		1,850	10,579	
Parkway Middle School			7,914	
Poinciana Elementary	19,655			
Reedy Creek Elementary School			7,055	
Thacker Avenue Elementary	6,648			
Westside K-8		9,603		
<b>Renovations/Playgrounds/Other</b>				
Central Elementary School			47,425	
Deerwood Elementary School			59,000	40,704
Horizon Middle School		8,023	7,380	123,520
Lakeview Elementary School				3,970
Poinciana High School			72,754	
Reedy Creek Elementary School			25,600	
St Cloud Elementary			23,373	
Thacker Avenue Elementary				70,660
<b>Roofing/Gutters/Covered walkways:</b>				
Boggy Creek Elementary School			4,709	
Chestnut Elementary	107,400			
Countywide			21,575	
Cypress Elementary School			4,918	
Discovery Intermediate School		9,082	93,272	
Kissimmee Elementary School	500	3,300		
Narcoossee Middle School		11,420	108,896	
Neptune Middle School	191,628	131,449		
Partin Settlement Elementary School	117,000			
Poinciana Elementary School	13,075	243,010		
Ross E. Jeffries Campus				49
Sunrise Elementary School	109,800			
St Cloud Elementary		59,597		
<b>Safety &amp; Security Equipment &amp; software</b>	701,003	519,017	1,140,922	701,272
<b>Security Modifications and improvements</b>	28,153	89,099	1,135,416	254,102
<b>Technology Infrastructure and equipment</b>	1,522,770	1,263,694	911,184	494,200
<b>Subtotal Other</b>	\$ 5,518,077	\$ 10,619,263	\$ 14,517,814	5,139,207
<b>TOTAL</b>	<b>\$ 57,370,940</b>	<b>\$ 54,352,496</b>	<b>\$ 35,889,385</b>	<b>22,197,718</b>

**SDOC Business Advisory Board  
Infrastructure Sales Surtax Expenditures (1/4 Cent)  
For the period ending 3/31/2022**

Type of Expenditure	Fiscal Year			
	2018-2019	2019-2020	2020-2021	2021-2022
Debt Service	\$ 6,551,233	\$ 6,561,298	\$ 6,568,081	\$ 243,030
Other:				
Athletic Facilities	\$ 889	\$ 4,060	\$ -	\$ -
Buses	219,747			
Remodeling	859,574	2,463		
Renovations-Canoe Creek		5,464,569	6,922,315	1,986,258
Student Computers	249,600	118,972		
Site improvements	12,324			113,348
Technology	160,573	7,001		
White Fleet	551,097	879,502	83,748	305,146
Subtotal Other:	\$ 2,053,804	\$ 6,476,567	\$ 7,006,063	\$ 2,404,752
<b>TOTAL</b>	<b>\$ 8,605,037</b>	<b>\$ 13,037,865</b>	<b>\$ 13,574,144</b>	<b>\$ 2,647,782</b>

# Facilities Update



*Every Child, Every Chance, Every Day!*



# Facilities Update

- Project Updates

• Projects in Pre-Planning	\$301,287,504
• Projects in Planning	\$39,089,879
• Projects in Design	\$177,771,266
Projects in Construction	<u>\$191,788,982</u>
<b>Current Program</b>	<b>\$709,937,631</b>

# Projects in Pre-Planning

<u>Project</u>	<u>Budget</u>	<u>Proposed Opening</u>
Kindred K8 School "AA"	\$83,793,156	2025
Roan Bridge K8 School "DD"	\$83,793,156	2025
Nova Road HS "AAA"	\$133,701,192	2026
<b>TOTAL</b>	<b>\$301,287,504</b>	

# Projects in Planning

<u>Project</u>	<u>Budget</u>	<u>Proposed Opening</u>
OCSA Comprehensive Renovation	\$2,000,000	TBD
RCES Comprehensive Renovation	\$2,000,000	TBD
Transportation West	\$24,427,743	July 2025
SCHS Wing Addition	\$10,662,136	August 2024
<b>TOTAL</b>	<b>\$39,089,897</b>	

# Projects In Design

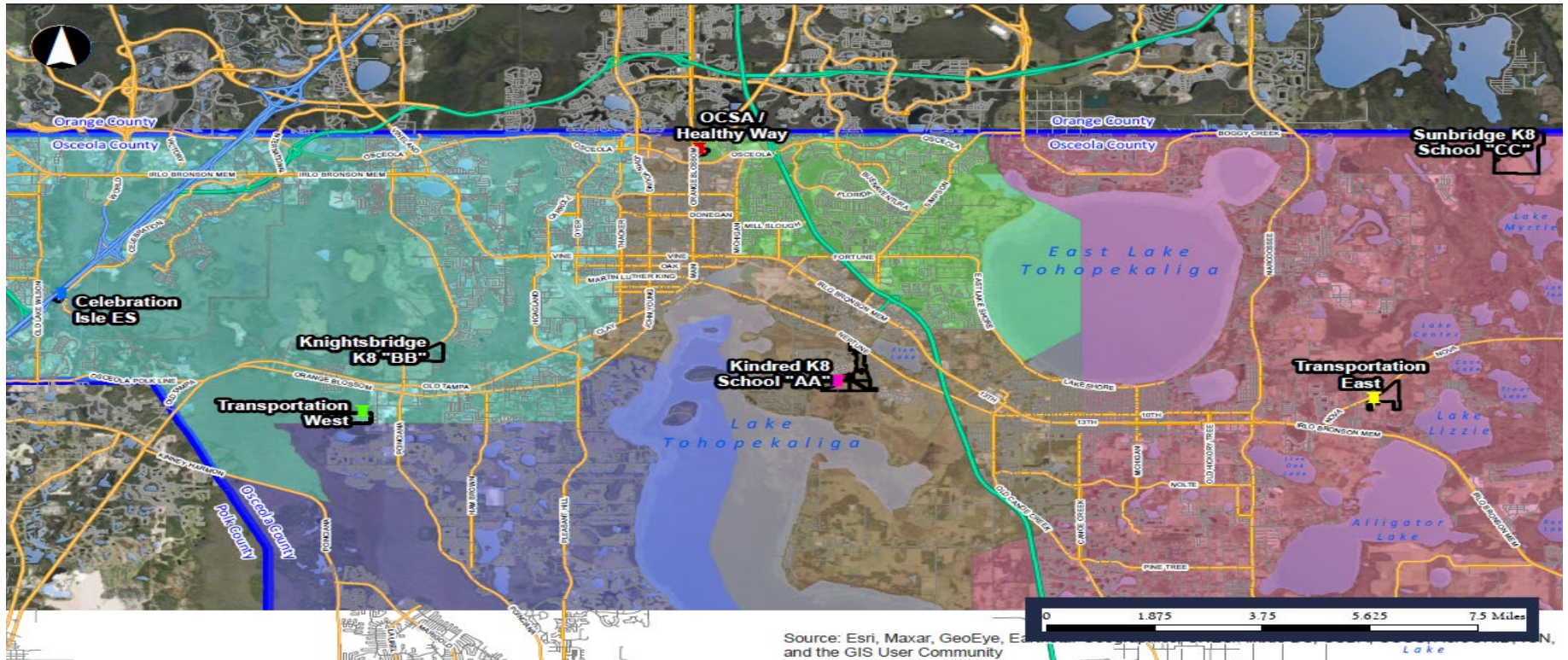
<u>Project</u>	<u>Budget</u>	<u>Construction NTP</u>
K8 School “CC” (Weslyn Park)	\$68,979,729	1/07/2023
K8 School “BB” (Westside Relief)	\$67,310,013	1/10/2023
Transportation East	\$22,207,016	Feb 2023
Healthy Way and OCSA Bus Road	\$4,000,000	TBD
PNHS Network Cabling Replacement	\$3,000,000	5/20/2022
NPES Additional Car Queuing	\$1,136,698	10/04/2022
CAES Kitchen Renovation	\$1,900,000	September 2022
HRHS Kitchen Renovation	\$1,900,000	Postponed
PSES Kitchen Renovation	\$1,900,000	Postponed
KMES Kitchen Renovation	\$1,900,000	September 2022
WK8S Kitchen Renovation	\$1,900,000	September 2022
HRHS AG Building Reconfiguration	\$ 992,810	08/30/2022
NPMS Rear Bus Loop	\$645,000	TBD – On Hold
<b>TOTAL</b>	<b>\$177,771,266</b>	



# Projects in Construction

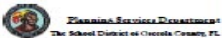
<u>Project</u>	<u>Budget</u>	<u>Substantial Completion</u>
Admin 2000 Roof Replacement	\$1,261,132	4/26/2023
Canoe Creek K8 Year 2	\$30,021,000	12/04/2021
oTECH Welding Program	\$3,500,000	7/29/2022
DAS Emergency Radio Projects (2)	\$690,695	TBD
Cyclical Capital Projects (2)	\$113,432	Various
Cafeteria Refresh Projects (7)	\$725,000	Various
PROD & SNS Roof Replacement	\$524,237	6/16/2022
CLHS Track Resurfacing	\$450,939	7/25/2022
Celebration Isle ES	\$40,933,164	05/15/2023
GWHS Comprehensive	\$111,823,113	7/26/2024
HRHS Space Reconfiguration	\$1,746,270	1/04/2023
<b>TOTAL</b>	<b>\$191,788,982</b>	

# Map- Project Locations



Upcoming Project Locations  
for Business Advisory Board

Not for Publication.  
Working Copy 03/23/2022

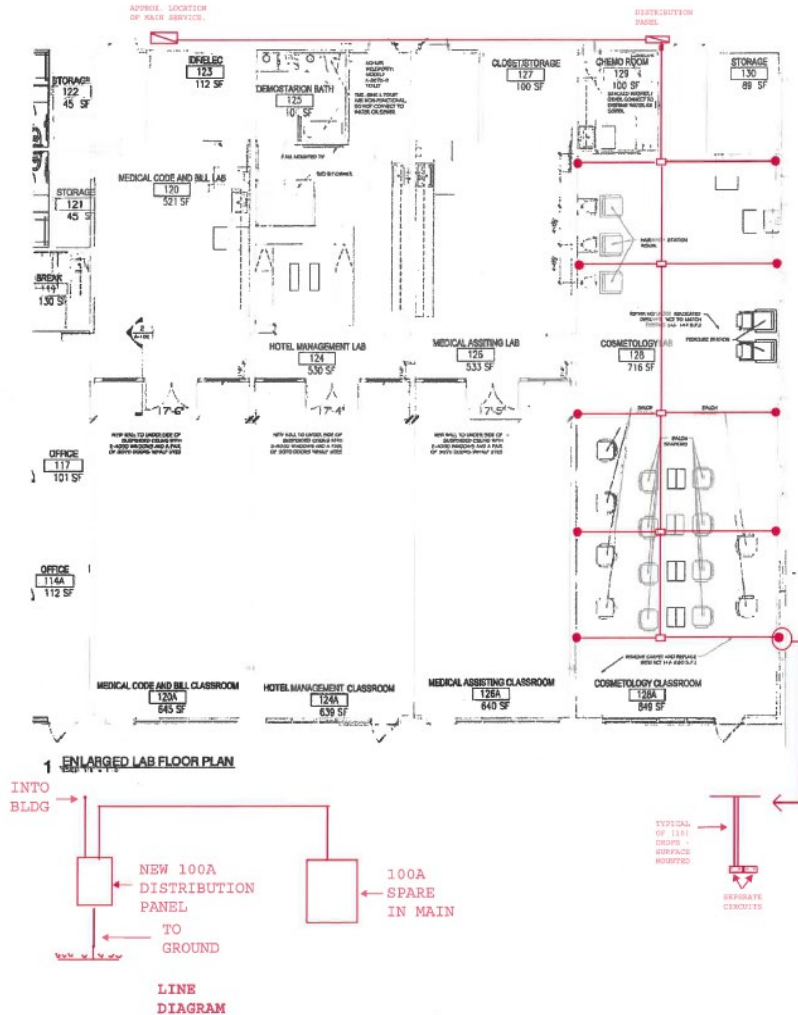


## Legend

- |                                     |                              |                      |
|-------------------------------------|------------------------------|----------------------|
| Upcoming Facility Project Locations | Sunbridge K8 School "CC"     | SB Member District 1 |
| Celebration Isle ES                 | Transportation East          | SB Member District 2 |
| Kindred K8 School "AA"              | Transportation West          | SB Member District 3 |
| OCSA / Healthy Way                  | Knightsbridge K8 School "BB" | SB Member District 4 |
|                                     |                              | SB Member District 5 |
|                                     |                              | Project Parcels      |

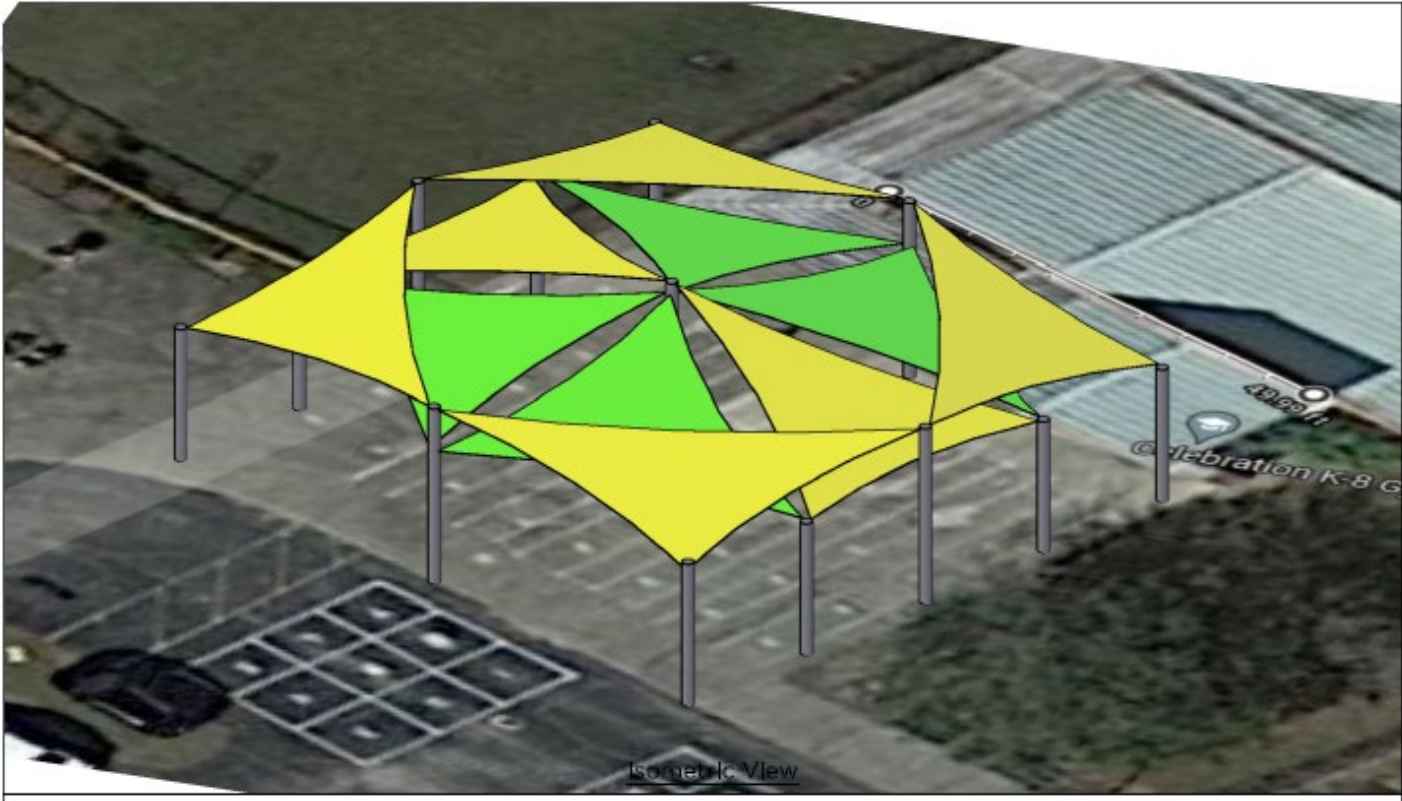
Disclaimer: All data, information, and maps are provided "as is" without any warranty or representation of accuracy, timeliness, or completeness. The School District of Osceola County, Florida (the "School District") cannot accept any responsibility for errors, omissions, or positional accuracy. The School District specifically disclaims any warranty, either express or implied, including without limitation, the implied warranties of merchantability and fitness for a particular purpose. The burden of determining accuracy, timeliness, merchantability, and fitness for a particular use rests solely on the requestor, and the requestor assumes all risk as to quality and performance. In no event will the School District or its staff be liable for any direct, indirect, incidental, special, consequential, or other damages, including, without

# O-Tech West – Power





# Celebration K8 – Shade Structure



# Celebration HS – Track



# Cypress ES – Wheelchair Accessible Playground



# PROD/SNS - Roof





# Elementary A – New Construction



# Gateway HS - Comprehensive



# Summer 2022 – Projects to Completed

- ❖ Celebration K8 – Shade Structure
- ❖ Harmony High School Space Reconfiguration
- ❖ Poinciana High School Network Cabling – Late Summer Start
- ❖ Neptune Elementary School Car Queuing – Late Summer Start
- ❖ oTech Welding- To be completed 7/29/2022
- ❖ PROD & SNS Roof Replacement- To be completed 7/18/2022
- ❖ CLHS- Track Resurfacing- To be completed 8/31/2022

# CCNA Solicitations - Summer 2022

- ❖ Transportation East (CM)
- ❖ Transportation West (Design)
- ❖ Healthy Way/OCSA Bus Road (CM)
- ❖ Transportation West (CM)
- ❖ SCHS Wing Addition (CM)
- ❖ K8-CC (CM)
- ❖ K8-DD (CM)
- ❖ HS-AAA (CM)

*Every Child, Every Chance, Every Day!*



## **Comments and Discussion**